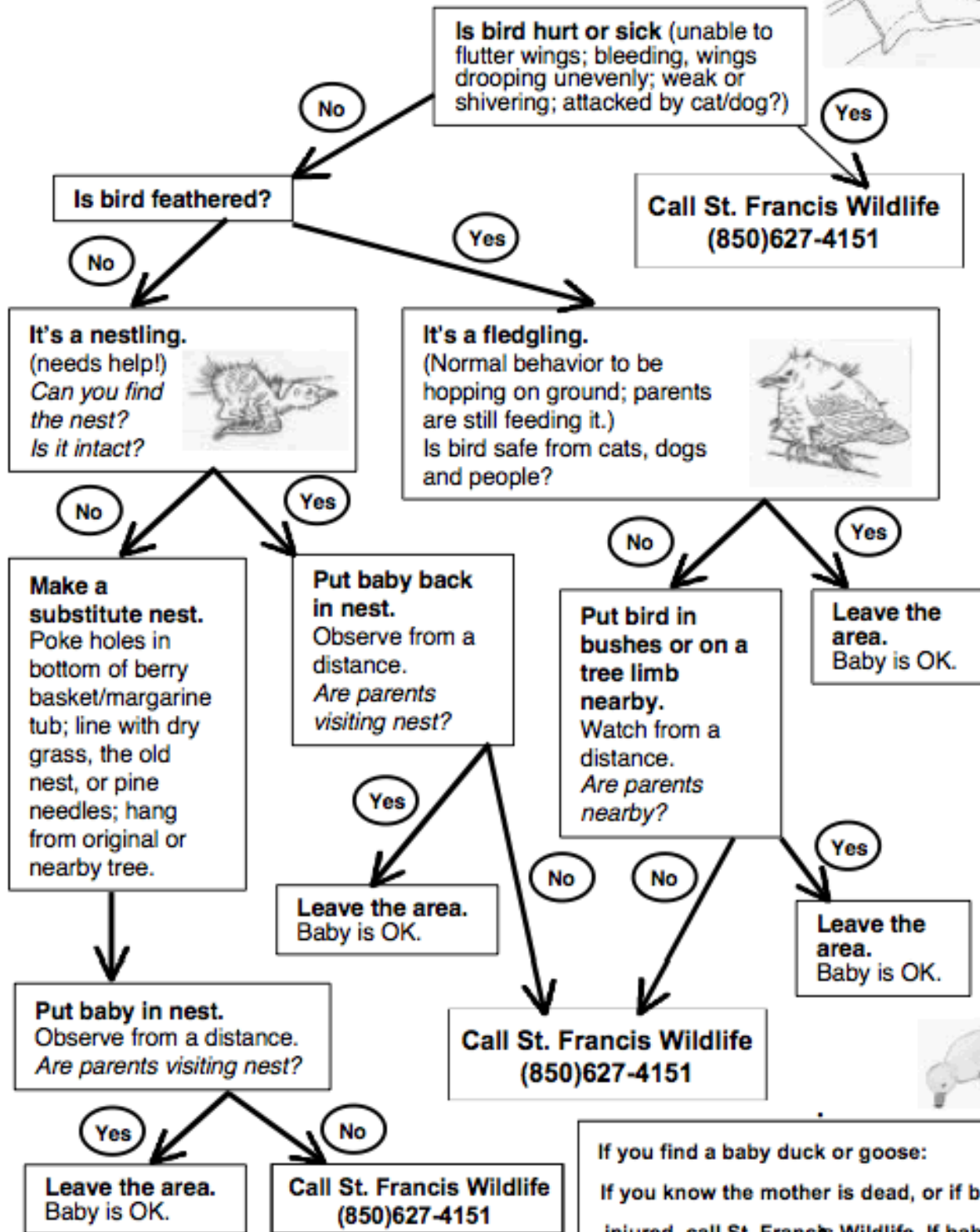


# I Found a Baby Bird. Now What?



**If you find a baby duck or goose:**  
 If you know the mother is dead, or if baby is injured, call St. Francis Wildlife. If baby is separated from the mother and you know where she is, place baby close by so she can hear it. Watch from a distance. If the mother is not found or does not claim the baby within an hour, call St. Francis Wildlife.

**A baby's best chance for survival is its mother**